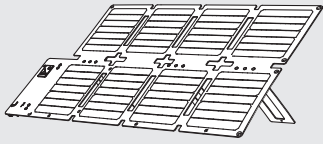


What's in the Box

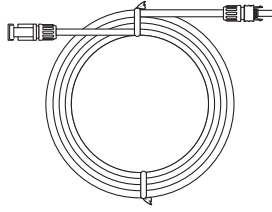
Using Your Product

Specifications

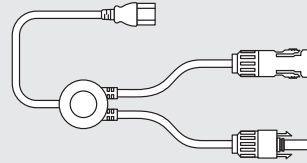
What's in the Box



Anker SOLIX PS60 Portable
Solar Panel



Extension Cable (2.5 m)



Solar to XT60 Charging
Cable (0.5 m)



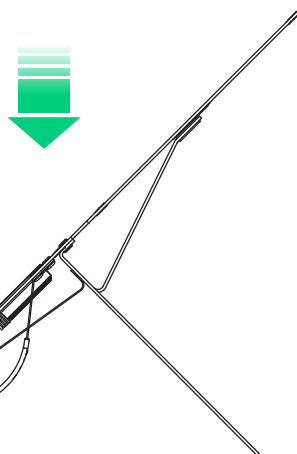
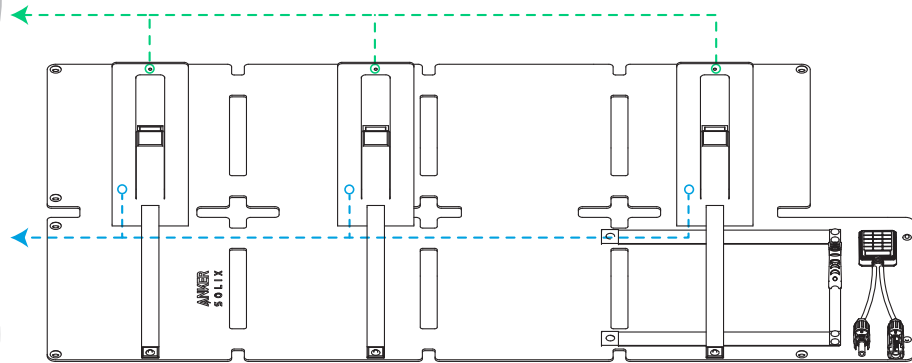
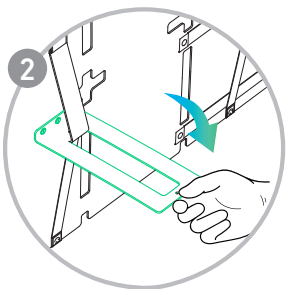
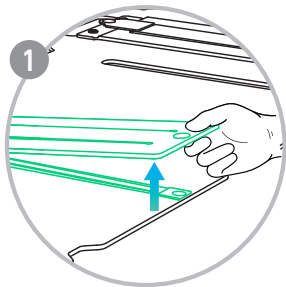
Hook
(x2)

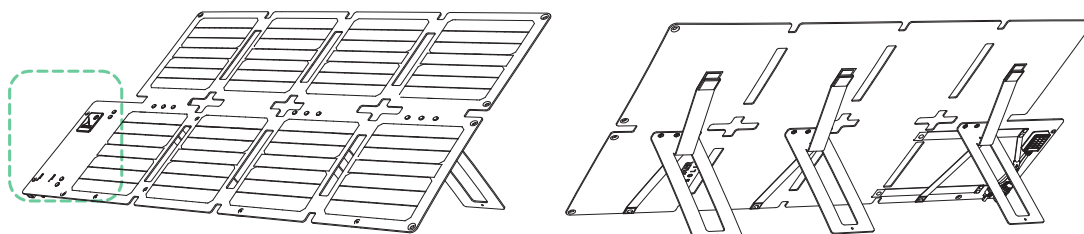
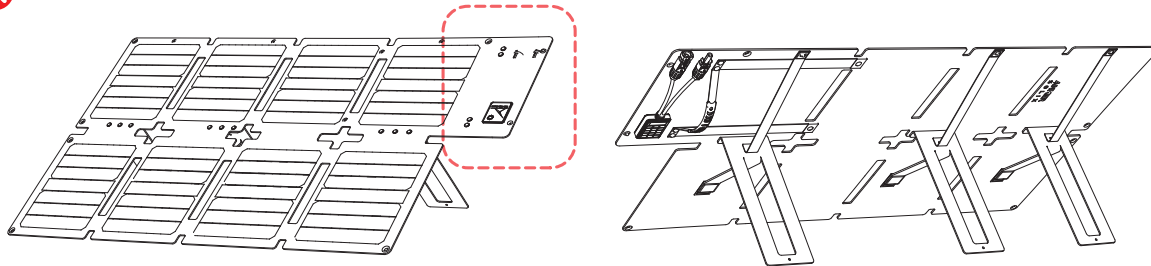


Documents

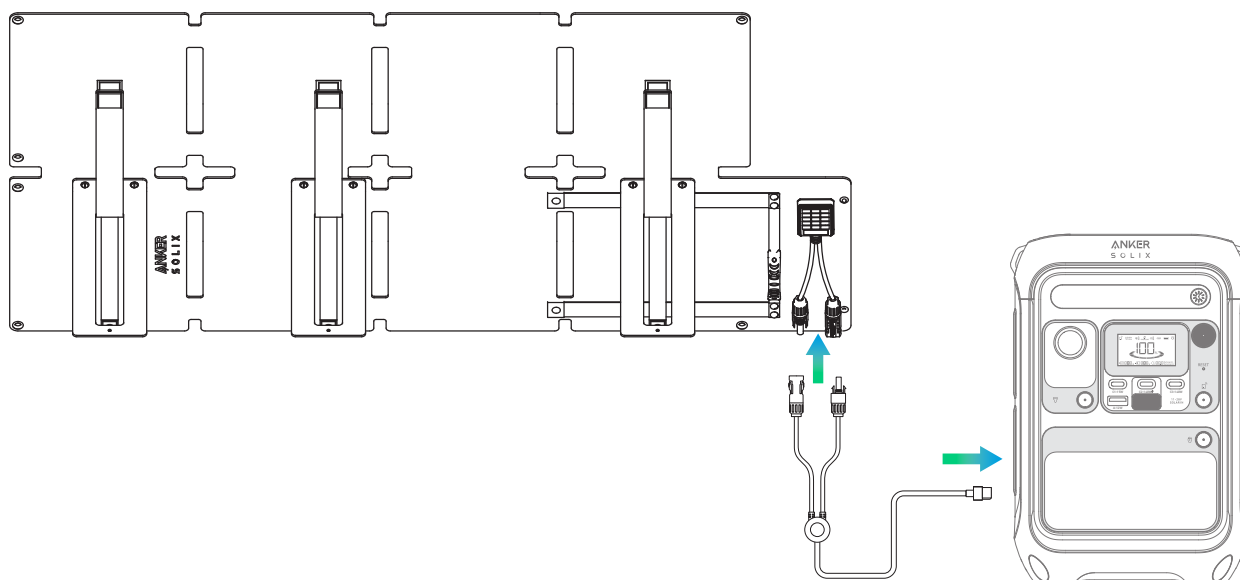
Using Your Product

1. Unfold Anker SOLIX PS60 Portable Solar Panel and its stand.





2. Charge your portable power station with the included Solar to XT60 Charging Cable. If you want to extend the length of the cable, use the included 2.5 m extension cable.



Notes:

- Anker SOLIX PS60 Portable Solar Panel can not store electricity. You will need a portable power station to store power.
- Charging efficiency is subject to sunlight intensity.
- Keep your portable power station away from direct sunlight. Excessive heat may cause damage.
- 60W refers to the power of the solar panel, which is not equal to the actual power of the output ports. There will be some power loss when solar energy is transferred into electrical energy, so the actual power of the output ports will be less than the power of the solar panel.

Specifications

Peak Power	60W
Rated Voltage	16V
Rated Current	3.75A
Dimension (Folded)	9.1 × 10.5 × 2.5 in / 23.2 × 26.6 × 6.4 cm
Dimension (Unfolded)	40.7 × 21.7 × 0.7 in / 103.3 × 55.1 × 1.7 cm
Net Weight	1.7 kg / 3.7 lb