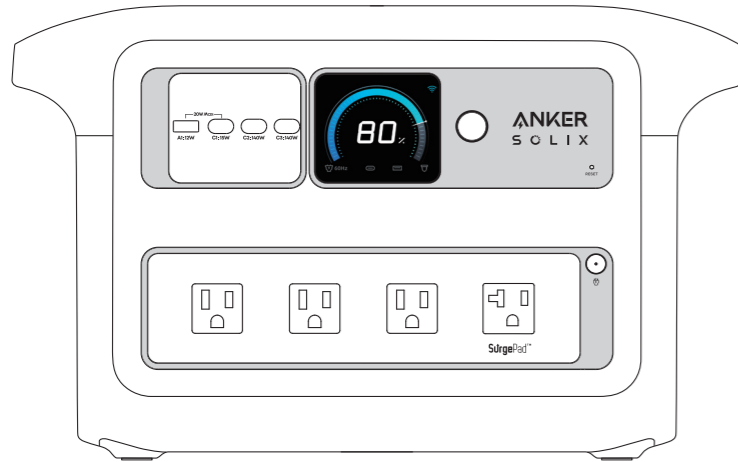


# ANKER SOLIX

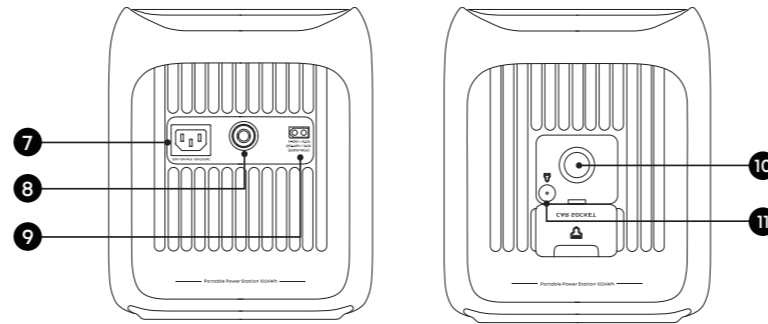
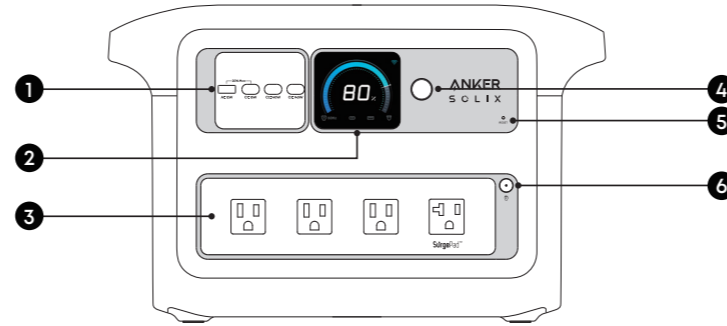
## QUICK START GUIDE

### Anker SOLIX C1000X Gen 2 Portable Power Station



Scan for Full User Guide

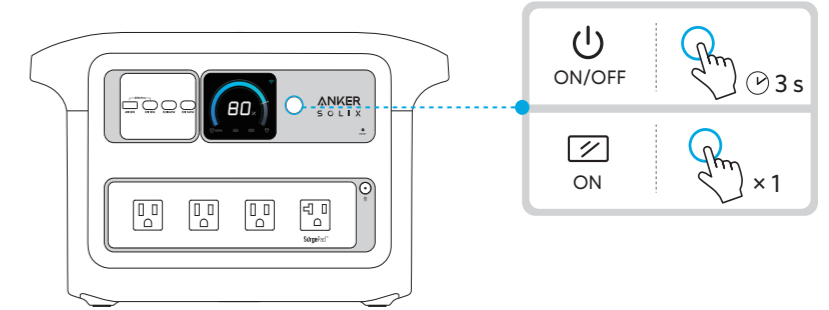
## Product Overview



- |                     |                              |                    |
|---------------------|------------------------------|--------------------|
| 1 USB Ports         | 2 LCD Screen                 | 3 AC Output Ports  |
| 4 Main Power Button | 5 Reset Hole                 | 6 AC Output Button |
| 7 AC Input Port     | 8 Overload Protection Switch | 9 XT60i Input Port |
| 10 Car Socket       | 11 Car Socket Button         |                    |

## Powering On/Off

\* Recharge to activate before first use.

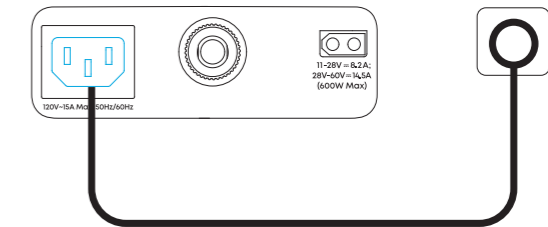


## Recharging the Power Station

### AC Recharging

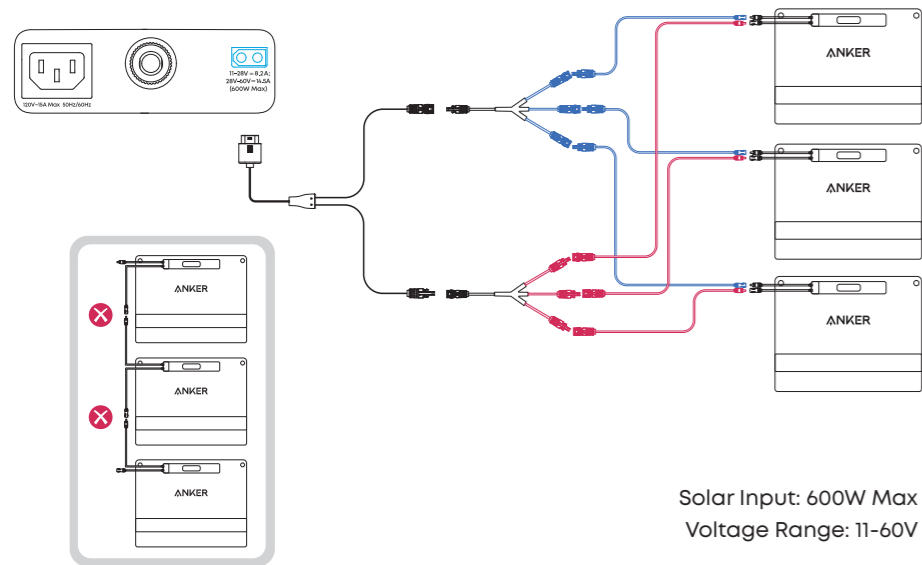
Standard Recharge Mode (1,200W Max) | UltraFast Recharge Mode (1,600W Max)

To protect the battery, use normal recharging and enable UltraFast only when necessary via the Anker app.



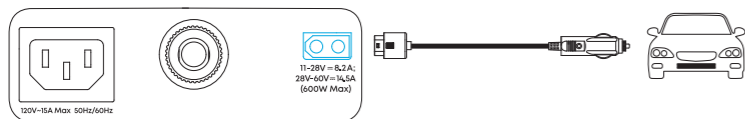
## Solar Panel Recharging

- The PV connector to XT60i charging cable and the solar panel extension cables (10 ft / 3 m) are included with Anker SOLIX solar panels.



Solar Input: 600W Max  
Voltage Range: 11-60V

## Car Recharging



PAP 22  
Raccolta Carta

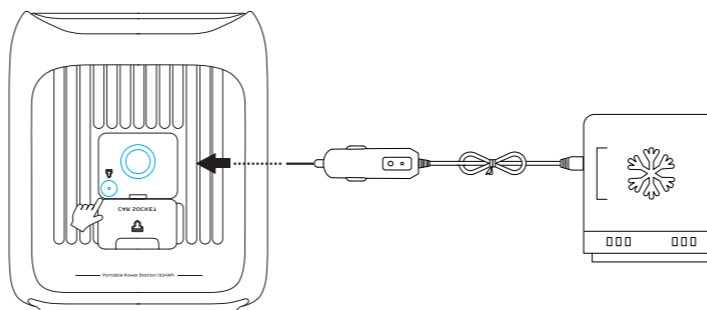
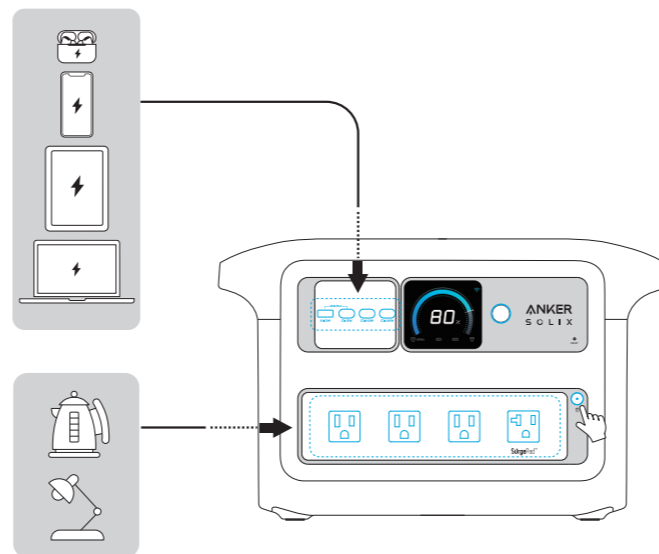


Product Number: A1765  
51005005625 V1



## Charging Your Devices

### AC / USB / Car Socket Charging



## Using the App

